
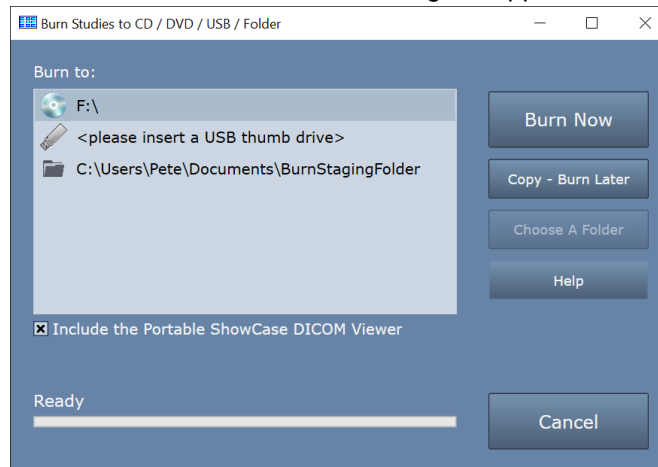




# Burning Studies to CD, DVD, or USB Using ShowCase Viewer or Image Center Console

## Burning to CD/DVD/USB

1. Insert the CD, DVD, or USB stick into your computer.
2. Open to the Study Lists window.
  - a. In ShowCase, click the  icon or go to the File => Open => Study Lists or press ctrl-O
  - b. In Image Center, start the Image Center Console and click the Manage Studies button.
3. Select the studies you want to burn.
4. Press the Burn button near the bottom of the screen. A dialog will appear:



5. Select your destination (if it's not already selected) and click "Burn Now"
6. A series of progress dialogs will appear as your studies burn to your destination media.

**Note:** Do not add studies to a CD or DVD that already has studies burned onto it, as the results will be unpredictable. Always use a new empty CD or DVD. This limitation does not apply to USB.


### Including the Portable ShowCase DICOM Viewer

When you check this option, a portable version of ShowCase is burned to the media along with your studies. This will allow someone viewing that media on a Windows computer to easily view the studies on the media, which are in native DICOM format.

## Burn Destinations

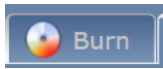
You can 'burn' studies to CDs, DVDs, USBs, or a staging folder on your computer. When you choose a staging folder, you can then copy the staging folder using Windows onto removable media. The system will remember your chosen destination after you exit, for your convenience.

### Changing the Staging Folder

To change your staging folder, click on the folder icon  C:\Us to select the staging folder. The **Choose A Folder** button will become available. Click that button and select a new folder. The system will remember that folder from now on.

### Copy – Burn Later

This button allows you to queue up multiple studies for burning to CD/DVD later. They will all appear under the "Burn Tab" in the study list, which has an icon that looks like this:



Copy – Burn Later is only available when you’ve selected a CD or DVD as your destination. To use this feature:

1. Select a study in the study list.
2. Click the Burn button at the bottom of the study list.
3. Select the CD/DVD destination.
4. Click Copy – Burn Later -> You will see progress dialogs staging your burn and the dialog will close
5. Go back to the Study List and repeat until you’ve queued up all the studies you want to burn.
6. To burn the studies, click the C: Burn tab in ShowCase and click Burn

You can check which studies are queued up for later burning by clicking on the C: Burn tab in ShowCase.

### Will My Studies Fit on the CD/DVD?

If you click on the Burn tab in ShowCase, you will see a number on the right side of the study list telling you how much space your studies will take up on the disk. By comparing this against the capacity of your CD or DVD you can tell if it will fit.

**Note:** The burn tab shows you the contents of the Windows “burn pending” folder on your PC. It’s not the same thing as the staging folder, which can be pretty much any folder on your PC.

## Troubleshooting

### Windows Integrated CD/DVD Writing

If you are burning studies to CD or DVD, please make sure Windows Integrated CD/DVD Writing is turned on. A quick way to check this is to place a blank CD in your burning drive and try burning some files to it from Windows File Explorer. If you can do this, then you’re ready to burn to CD and DVD.

### The Burn button is missing from my Study List

If you do not have a “Burn” button on your Study Lists Window, then you are running either ShowCase Basic or the ShowCase Portable Viewer. Only ShowCase Premier, Workstation, and Image Center has the CD/DVD/USB burning feature.

### I don’t see my CD or DVD drive as a destination option in the Burn dialog

Make sure Windows Integrated CD/DVD writing is turned on. A quick way to check this is to place a blank CD in your burning drive and try burning some files to it from Windows File Explorer. If you can do this, then you’re ready to burn to CD and DVD.

### When I try to burn to USB, I get a dialog saying something about an upgrade feature?

This means you purchased your ShowCase product before release 6.1 and you do not have an active support plan that entitles you to his upgrade. Please contact [support@triltech.com](mailto:support@triltech.com) to reactivate your support plan.

### A Note on USB ‘Burning’

USB ‘burning’ does not require Windows Integrated burning. ‘Burning’ to a USB does not ‘burn’ the USB drive, as with a CD or DVD, it copies the studies to USB with the portable viewer so you can plug it into another computer and run the portable viewer to view the studies you ‘burned’ to the USB.

**SHOWCASE® is a registered trademark of Trillium Technology, Inc.**